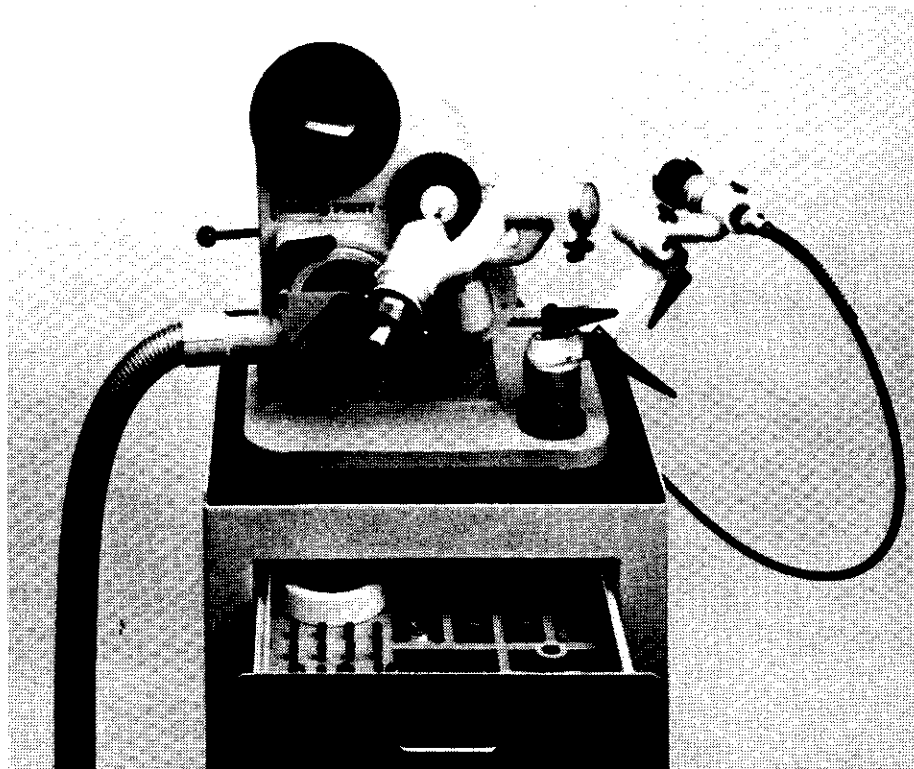


MEGA POINT

UNIVERSAL OPTICAL DRILL GRINDING MACHINE

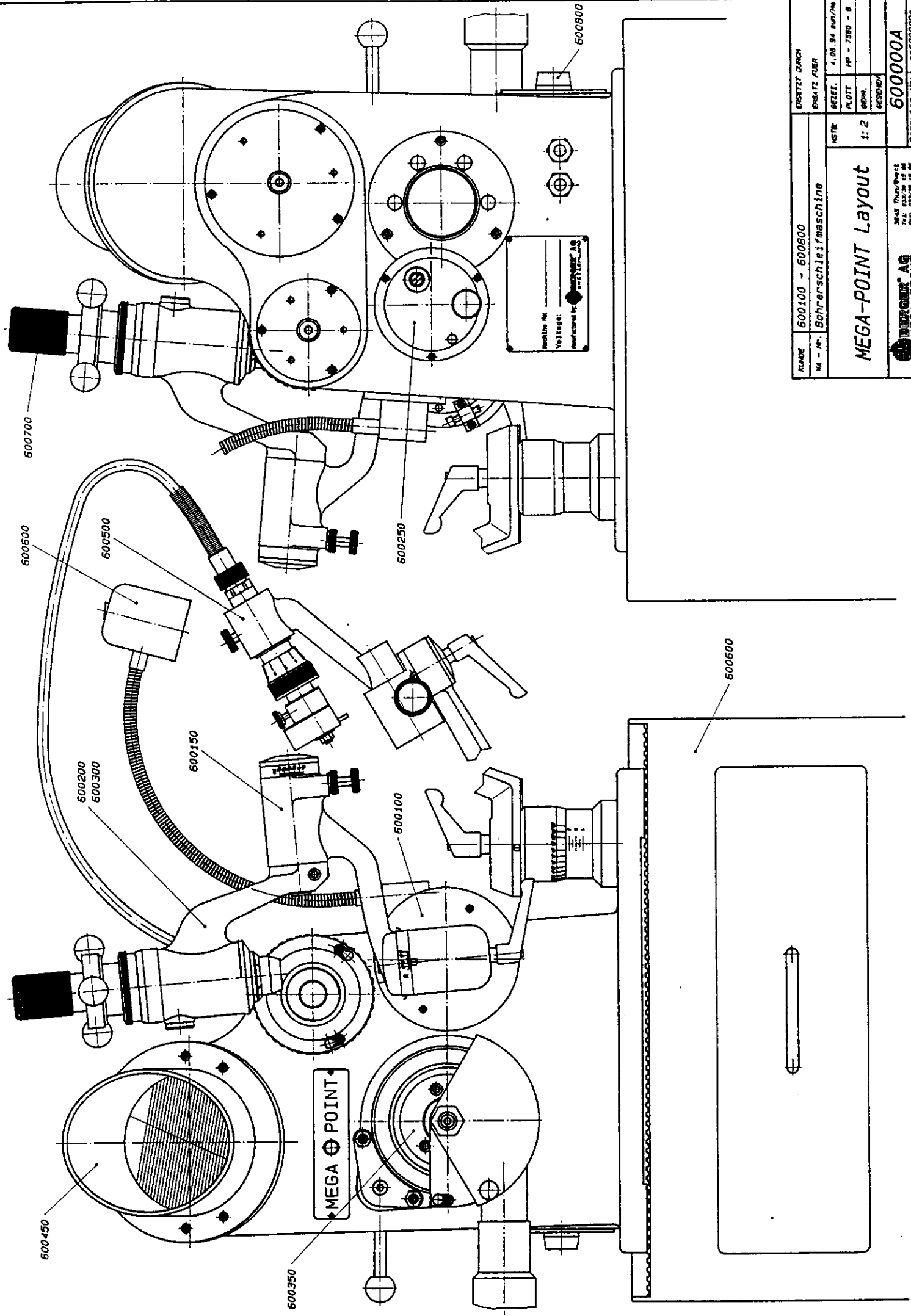
SPARE - PARTS - LIST



Berger AG • Mehrspindeltechnik
C.F.L. Lohnerstrasse 28E • CH-3645 Gwatt/Thun
Telefon 033 336 15 66 • Telefax 033 336 16 66

Machine No. : _____

Machine typ : _____



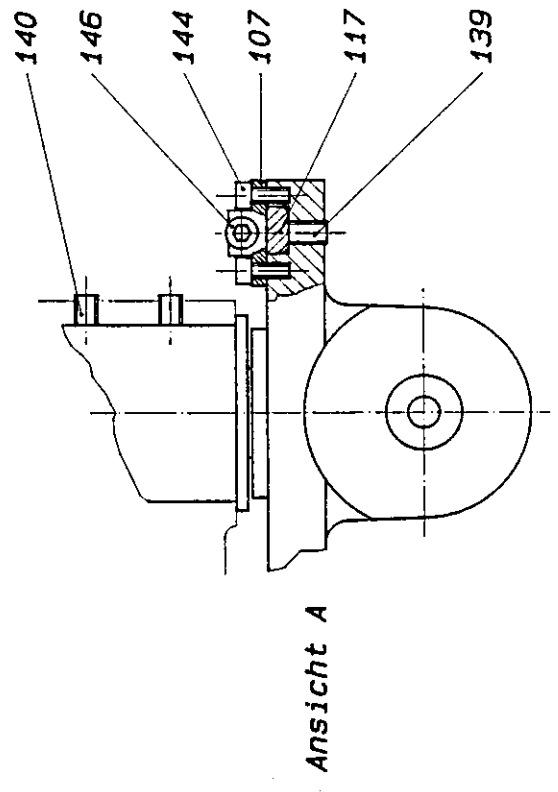
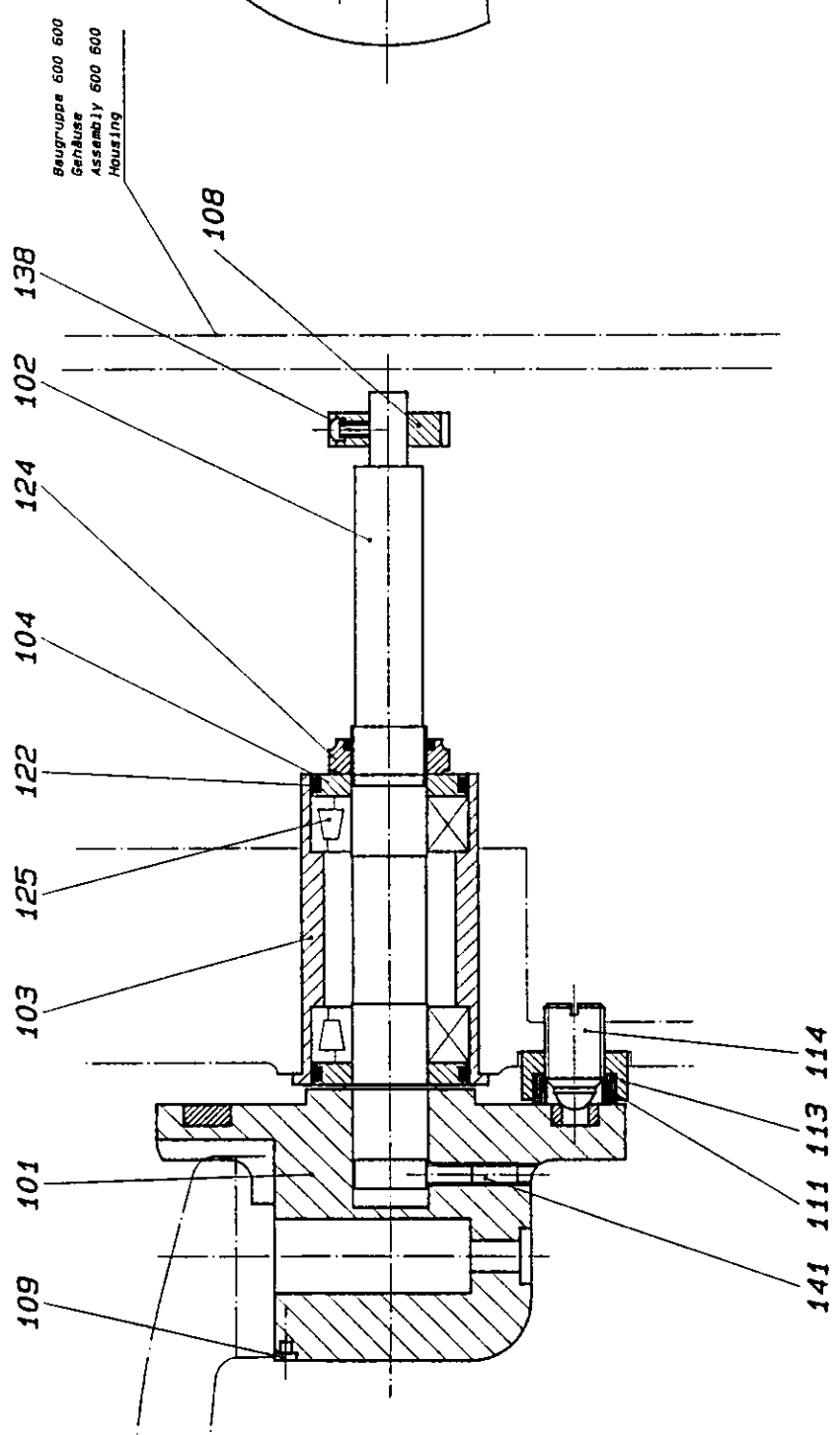
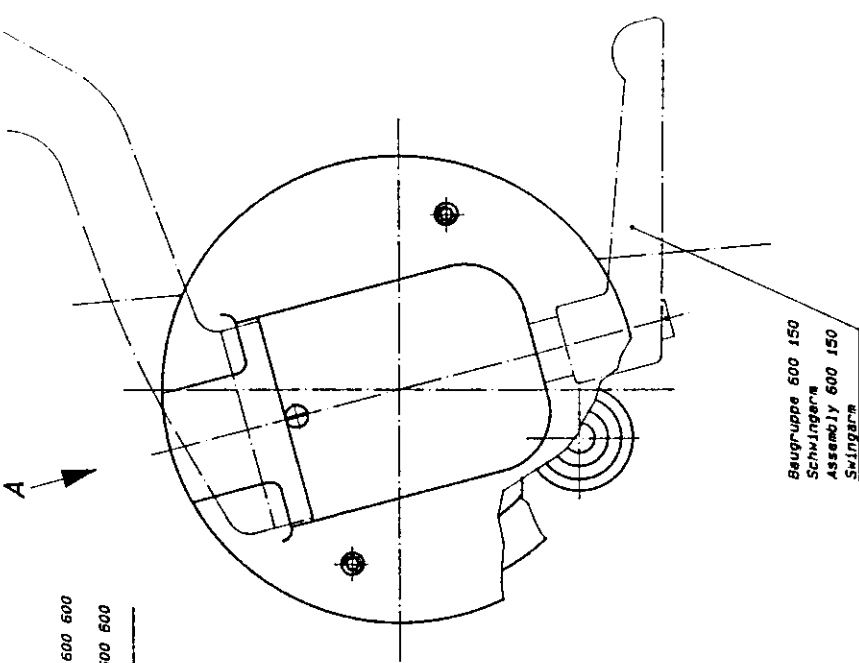
KUNDE	600100 - 600800	ERSATZ DURCH	ERSATZ FÜR	4.00. 94 mm/Min	600000A
MA - N°.	Bohrerschleifmaschine	GRZET.	PLOTT	AP - 7590 - 8	Computer-WF L 68500002
		NEZEL.	REPH.	600500/	
		MASS	1:2		
MEGA-POINT Layout					MAS Thun/Weiss P.O. Box 10 Post 10000 10 DE
BERGQUIR AG MEGA-POINT					

MEGA POINT

MEGA-POINT Layout

BERGQUIR AG
MEGA-POINT

600000A
Computer-WF L 68500002



Ansicht A

STÜCKZAHL	BEZUGSSTAND	POS.	WERKSTOFF	ANMÄSSLICH NIE
DAF. 7/72	KINDE			
PROJ.-NR.				
NSTR.		600100B		
PLOT		07.06.96 SW/NO		
BESCHV.		HP - 7500 - B		
BESCHV.		BGR.		
BESCHV.		BESCHV.		
NSTR.		1:1		
Position Unit		Schweiz/Thun		
Zentralverriegelung		Schweiz/Thun		
BERGER AG		MEGA-POINT		
COMPUTER-NR.		600100B		

134					
133					
132					
131					
130					
129					
128					
127	Support	600 127	1		
126					
125	Tapered Roller Bearing 32004X	952 550	2		
124	Elastic-Stop Nut M20x1	964 804	1		
123					
122	O-Ring ø36x3	957 683	2		
121					
120					
119					
118					
117	Index Ring	600 117	1		
116					
115					
114	Ball-Spring-Bolt	975 815	1		
113	Nut	600 113	1		
112					
111	Felt Wiper	600 111	1		
110					
109	Indicator	600 109	1		
108	Cam	600 108	1		
107	Stop Block	600 107	2		
106					
105					
104	Spacer	600 104	2		
103	Bearing Housing	600 103	1		
102	Swivel Shaft	600 102	1		
101	Swivel Flange	600 101	1		

Pos.	Article	Art. Nr.	Pcs	Price	Notes
------	---------	----------	-----	-------	-------

Customer:		Notes:	
-----------	--	--------	--

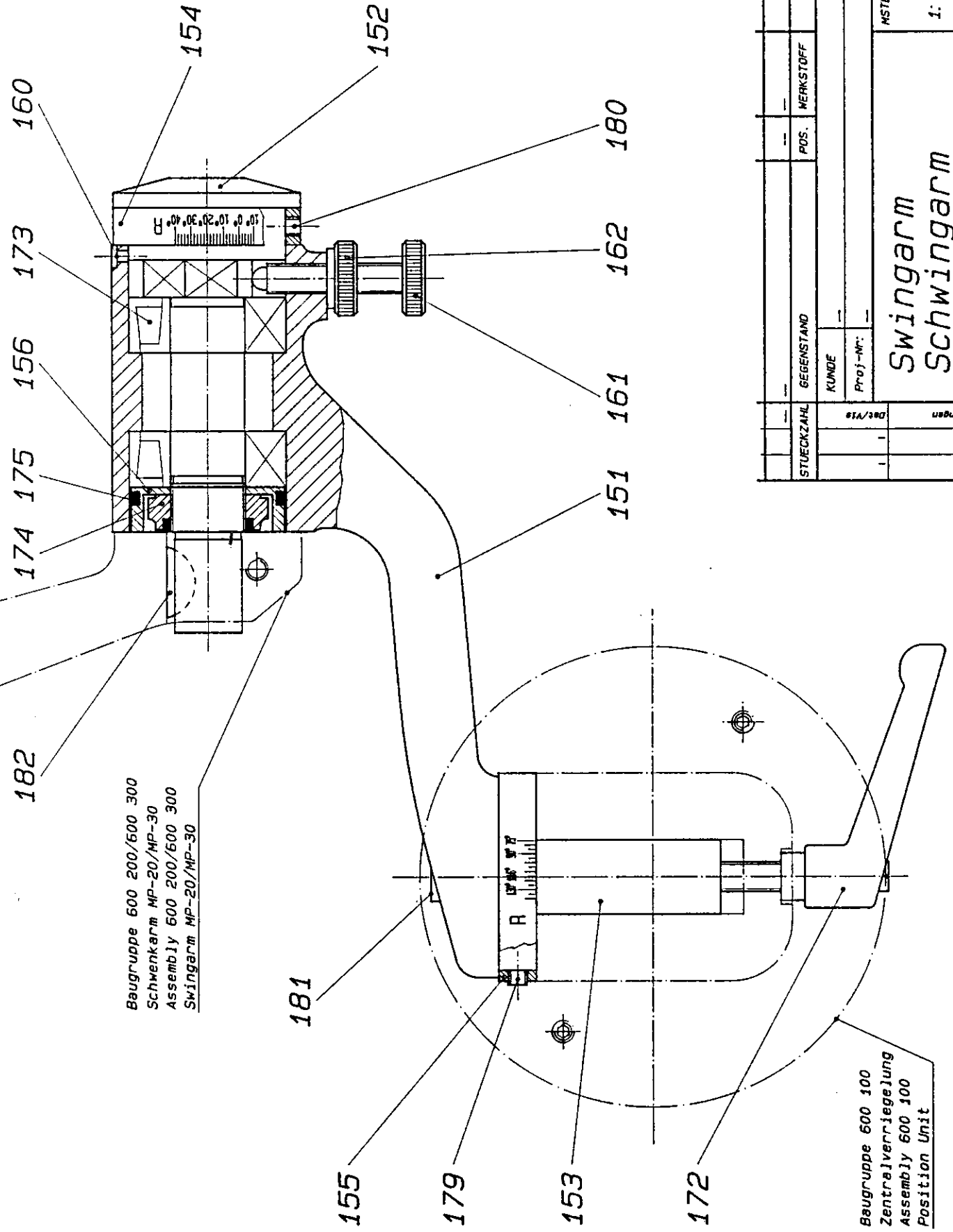
PO			
----	--	--	--

Projekt-Nr:			
-------------	--	--	--

Drawn:		Changes:	
--------	--	----------	--

Checked:			Page
----------	--	--	------

Approved:			1/2
-----------	--	--	-----



Baugruppe 600 200/600 300
 Schwenkarm MP-20/MP-30
 Assembly 600 200/600 300
 Swingarm MP-20/MP-30

Baugruppe 600 100
 Zentralverriegelung
 Assembly 600 100
 Position Unit

STUECKZAHL	GEGENSTAND	POS.	WERKSTOFF	MODELL	DIMENSION
	KUNDE				
	Proj.-Nr.				
				AERNLICH NIE:	
				MSTB:	07.06.96 sun/ND
					HP - 7580 - B
				1:1	GEPR.
					GESEHEN
				600150	
				Computer-Nr.: cp600150	

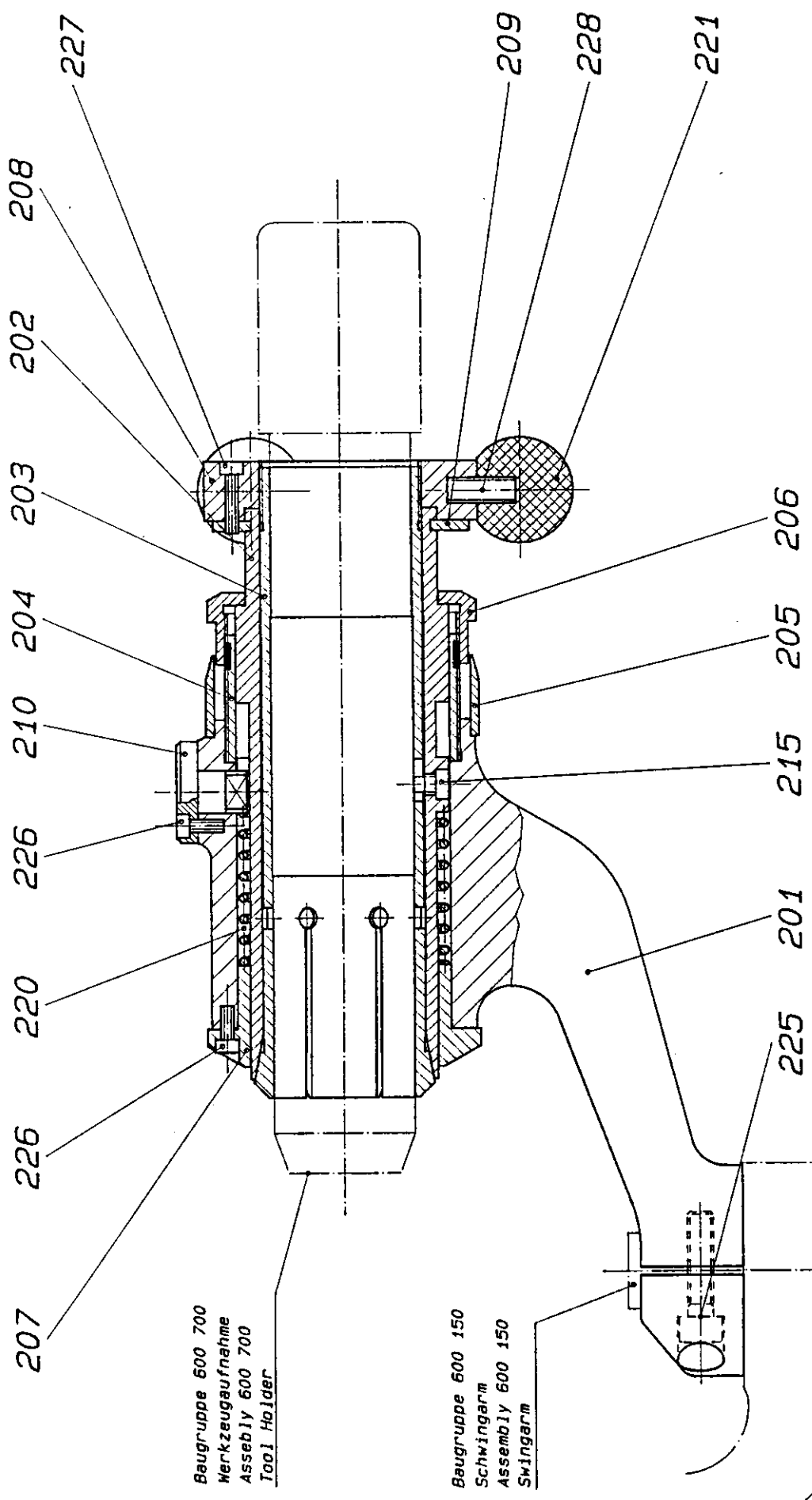
Swingarm
 Schwingarm



3645 Gwatt/Tnun
 Switzerland

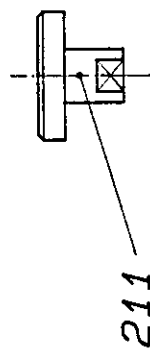
182	Woodruff Key 5x7.5	968 064	1		DIN 6888
181	Socket Cap Screw M8x16	960 083	1		DIN 912
180	Set Screw M5x4	962 041	2		DIN 913
179					
178					
177					
176					
175	O-Ring ø36x3	957 683	1		
174	Elastic-Stop Nut M20x1	964 804	1		
173	Taperd Roller Bearing 32004X	952 550	2		
172	Ratechet Lever	975 000	1		
171					
170					
169					
168					
167					
166					
165					
164					
163					
162	Locknut M8	600 162	2		
161	Adjusting Screw M8	600 161	2		
160	Indicator	600 109	1		
159					
158					
157					
156	Tension Spacer	600 156	1		
155	Scale Ring	600 155	1		
154	Scale Ring	600 154	1		
153	Swing Arm Shaft	600 153	1		
152	Swivel Shaft	600 152	1		
151	Swing Arm	600 151	1		

Pos.	Article	Art. Nr.	Pcs	Price	Notes
Customer:		Notes:			
PO					
Projekt-Nr:					
Drawn:		Changes:			Page
Checked:					1/1
Approved:					



Baugruppe 600 700
Werkzeugaufnahme
Asseby 600 700
Tool Holder

Baugruppe 600 150
Schwingarm
Asseby 600 150
Swingarm

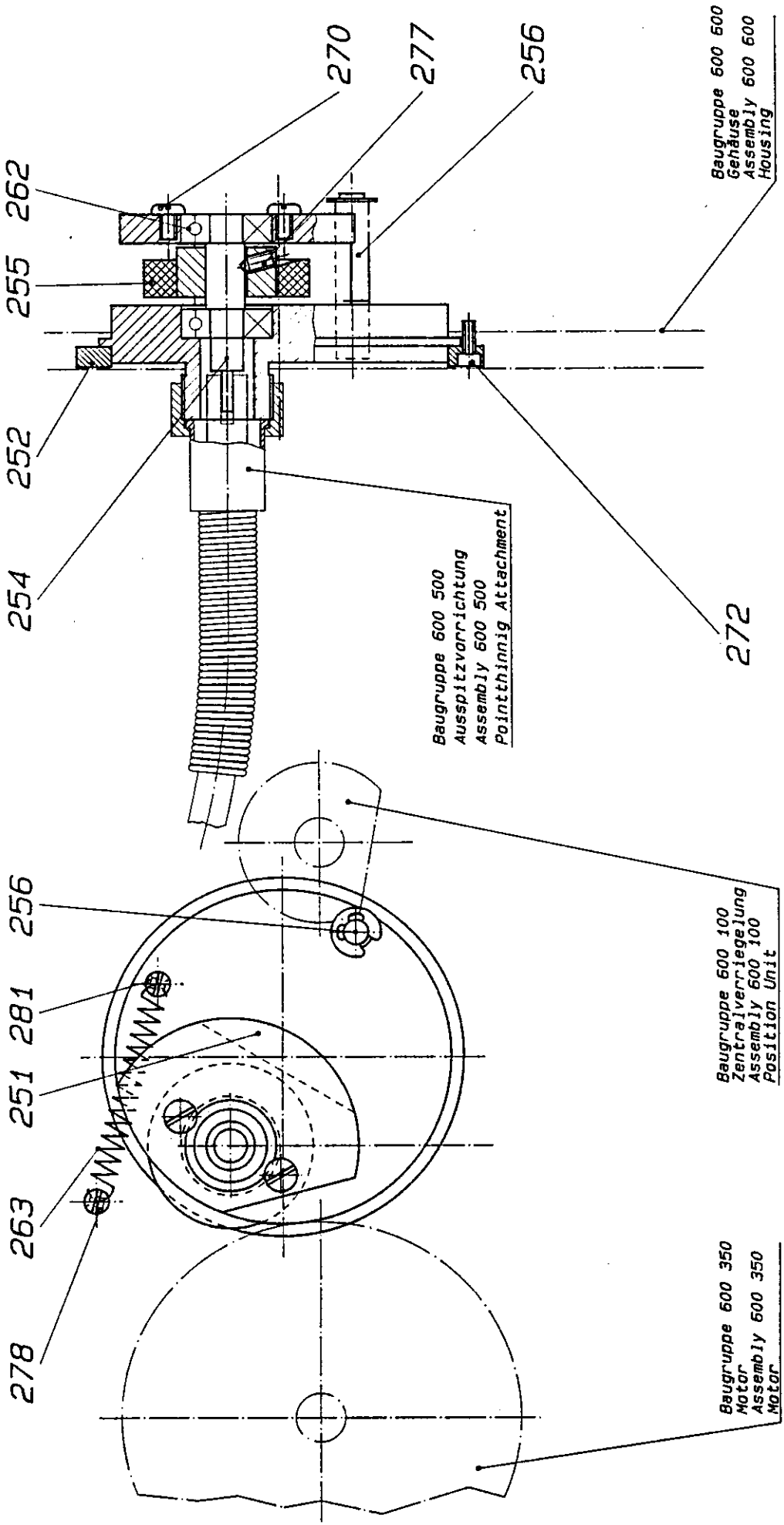


211
Option

STUECKZAHL	GEGENSTAND	POS.	WERKSTOFF	MODELL	DIMENSION
1	KUNDE				
1	Proj.-Nr.:				
1	MSTB:			07.06.96	sun/MO
1	Date/Vis			PLOTT	HP - 7560 - B
1	Änderungen			GEPR.	
1				GESEHEN	
1	Swivelarm MP-20			600200	
1	Schwenkarm MP-20			Computer-Nr.: cp600200	
1	BERGER AG			3645 Thun/Gwatt	
1	MEGA-POINT			Tel: 033/36 15 66	
1				Fax: 033/36 16 66	

228	Set Screw M6x16	962 092	3		DIN 913
227	Allen Screw M3x12	960 006	6		DIN 912
226	Allen Screw M3x8	960 004	6		DIN 912
225	Allen Screw M6x25	960 067	1		DIN 912
224					
223					
222					
221	Knob	975 010	3		DIN 319
220	Compression Spring	600 220	1		
219					
218					
217					
216					
215	Allen Screw	600 215	1		
214					
213					
212					
211	Index Pin 120°	600 211			Option
210	Index Pin 180°	600 210	1		Standard
209	Split Ring	600 209	1		
208	Clamp Nut	600 208	1		
207	Guide Bushing	600 207	1		
206	Feed Ring	600 206	1		
205	Feed Scale	600 205	1		
204	Threaded Insert	600 204	1		
203	Clamp Sleeve	600 203	1		
202	Index Sleeve MP-20	600 202	1		
201	Swivel Arm	600 201	1		

Pos.	Article	Art. Nr.	Pcs	Price	Notes
Customer:		Notes:			
PO					
Projekt-Nr:					
Drawn:		Changes:			Page
Checked:					1/1
Approved:					



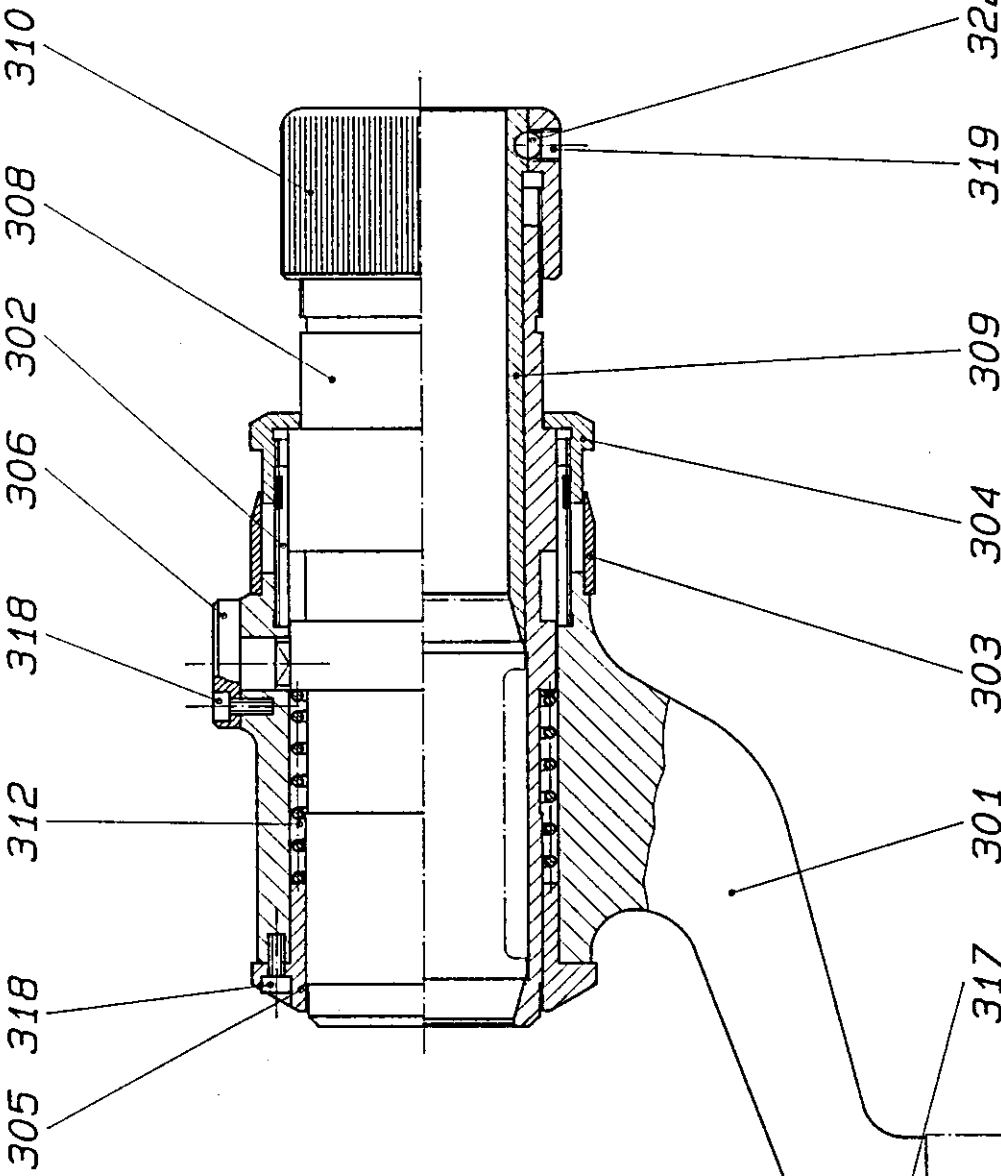
STUECKZAHL	GEGENSTAND	POS.	WERKSTOFF	MODELL	DIMENSION
	KUNDE				
	Proj.-Nr.:				
AENNLICH NIE:					
	MSTB:			GEZEI.	07.06.96 sun/MO
	07.08.96/MO			FLOTT	HP - 7580 - B
	Kontr.Länge was			GEPR.	
	Ind. Änderungen			GESEHEN	
	07.08.96/MO			1: 1	
Flex Shaft Drive Saitenantrieb					
 3645 Thun/Gwatt Tel: 053/26 15 66 Fax: 033/26 16 66					
				600250A	
				Computer-Nr.: CP600250B	

281	Hex Nut M6x20	600 281	1		
280					
279					
278	Set Screw M6x25	600 278	1		
277	Set Screw M4x8	962 027	1		DIN 914
276					
275					
274					
273					
272	Socket Cap Screw M3x8	960 004	3		DIN 912
271	Socket Cap Screw M6x16	960 065	2		DIN 912
270	Slotted Screw M4x6	964 030	2		DIN 85A
269					
268					
267					
266					
265					
264					
263	Tension Spring	600263	1		
262	Ball Bearing 608-2RS1	950 000	2		
261					
260					
259					
258					
257					
256	Roller Bolt	600 256	1		
255	Rubber Wheel	600 255	1		
254	Bearing Shaft	600 254	1		
253					
252	Lock Ring	600 252	1		
251	Cam Flange	600 251	1		

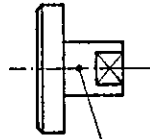
Pos.	Article	Art. Nr.	Pcs	Price	Notes
------	---------	----------	-----	-------	-------

Customer:		Notes:	
PO			
Projekt-Nr:			

Drawn:		Changes:		Page
Checked:				1/1
Approved:				




Baugruppe 600 150
 Schwingarm
 Assembly 600 150
 Swingarm

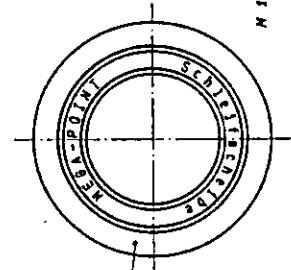
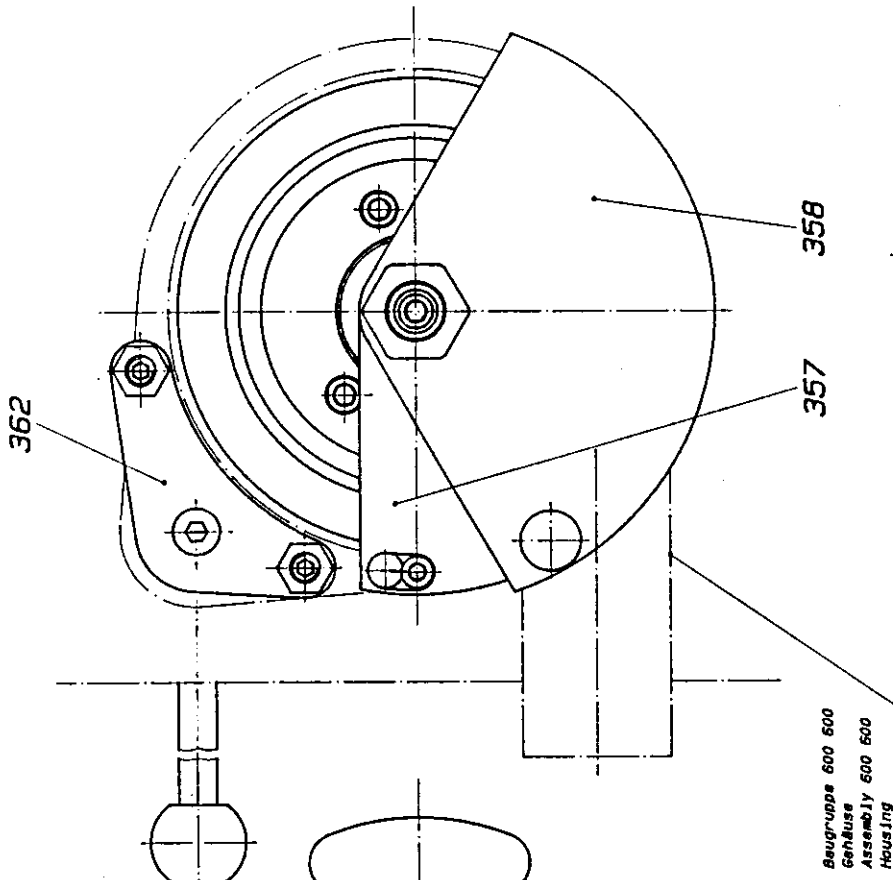


307
 Option

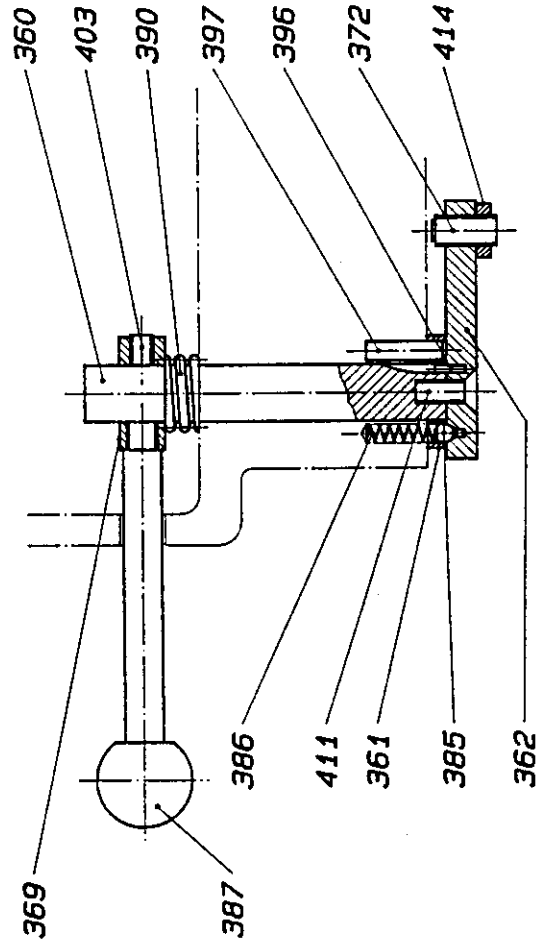
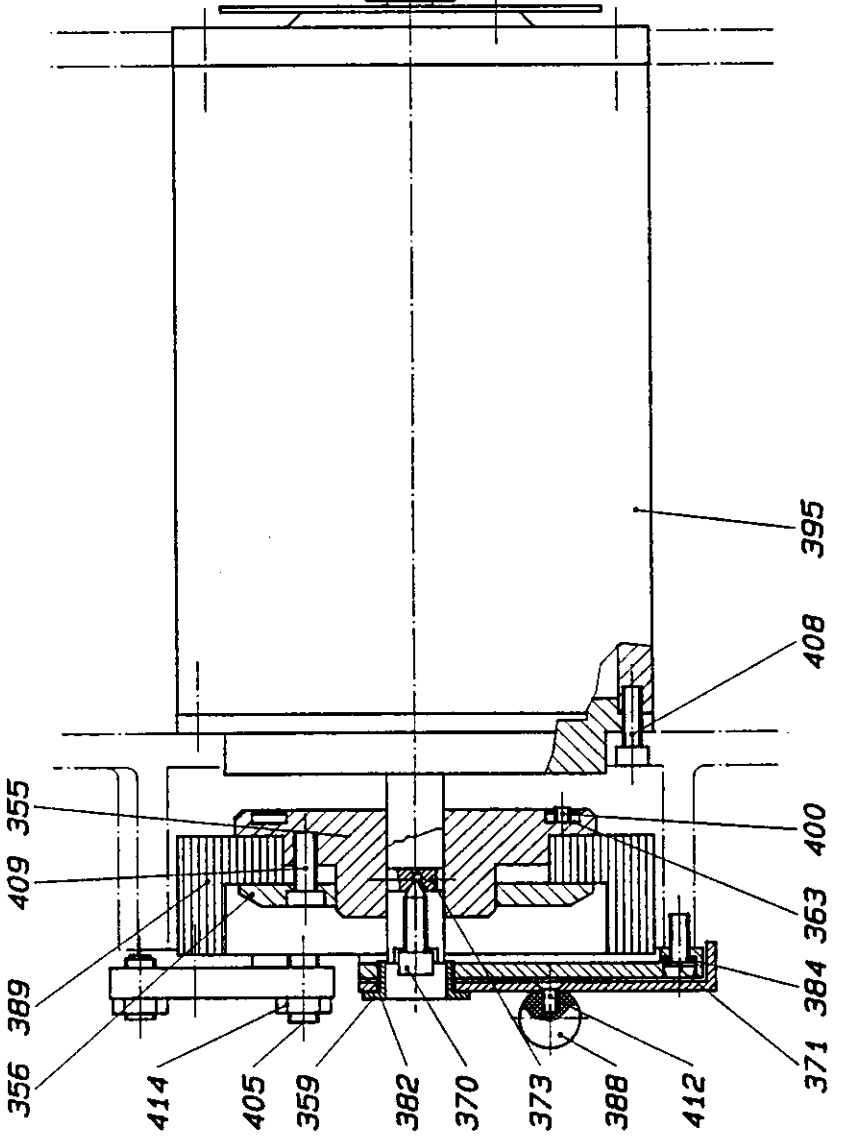
STUECKZAHL	GEGENSTAND	POS.	MERKSTOFF	MODELL	DIMENSION
	KUNDE				
	Proj.-Nr.:				
MSTB:			AEHNLICH NIE:		
Swivelarm MP-30			07.06.96 sun/mo		
Schwenkarm MP-30			PLOTT HP - 7580 - B		
			GEPR. 1: 1		
			GESEHEN		
			600300		
			Computer-Nr.: CP600300		
BERGER AG			3645 Thun/Gwatt		
MEGA-POINT			Tel.: 033/36 15 66		
			Fax: 033/36 16 66		

322	Iron Ball ø5	955 511	25		
321					
320					
319	Set Screw M6x4	964 000	1		DIN 551
318	Socket Cap Screw M3x8	960 004	6		DIN 912
317	Socket Cap Screw M6x25	960 067	1		DIN 912
316					
315					
314					
313					
312	Comprssion Spring	600 220	1		
311					
310	Compression Nut	600 723	1		
309	Collet Pusher	600 722	1		
308	Clamp Sleeve MP-30	600 721	1		
307	Index Pin 120°	600 211			Option
306	Index Pin 180°	600 210	1		Standard
305	Guide Bushing	600 207	1		
304	Feed Ring	600 206	1		
303	Feed Scale	600 205	1		
302	Threaded Insert	600 204	1		
301	Swivel Arm	600 201	1		

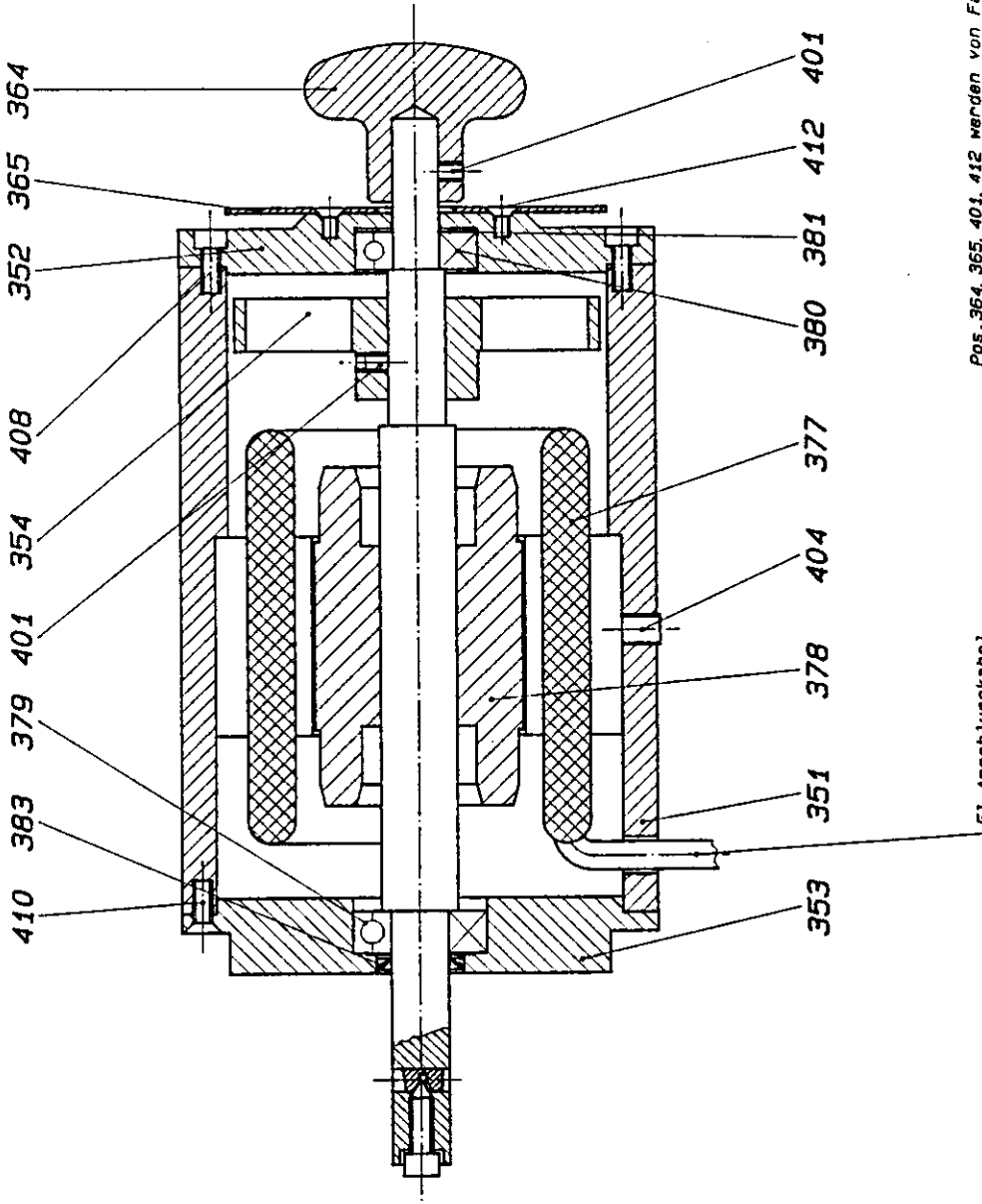
Pos.	Article	Art. Nr.	Pcs	Price	Notes
Customer:		Notes:			
PO					
Projekt-Nr:					
Drawn:		Changes:			Page
Checked:					1/1
Approved:					
		Swivelarm MP-30			600 300



M 1:2

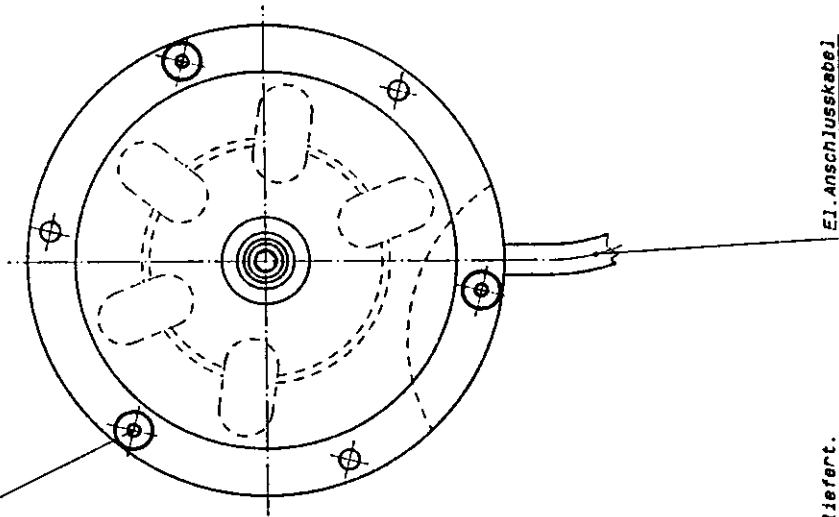


STÜCKZAHL	BEWERTUNGSZAHN	POS.	WERTSTUF.	MODELL	DIMENSION
				ADNALTON VTE	
				BEZET.	07.08.38 um/Ad
				PLATT	NP - 7590 - 8
				BEPM.	
				BESEIDN.	
				NOTE	1:1
				Grindig Unit Schleifeinheit	
				600350	
				BORGHEIM AG 5040 Thun/Valais CH - 4600 - 10 MEGA-POINT	
				Computer-Nr.: CB600350	



E1. Anschlusskabel

Senkschrauben in dieser
Position montieren



E1. Anschlusskabel

Pos. 364, 365, 401, 412 werden von Fa. Berger Angeliefert.
Rotor zusammen mit Pos. 364+401 auswuchten

STÜCKZAHL	BESTAND	POS.	MATERIAL	MODELL	DIMENSION
1					
KUNDE					
Proj.-Nr.:					
Motor					
BEZUG: 07.06.85 PLATT: NP - 7500 - B DRUK: 1:1 PRESSE:					
NOTIZ:					
BEZUGS-NR.: 600395 COMPILER-NR.: 600395					
BERGER AG MEGAS-PPOINT 8040 Birmensdorf Schweiz					

384	O-Ring ø4,5x1,8	957 580	2		
383	Cup Seal G15x23x3	957 020	1		
382	Spring Washer 6201 K3	966 923	1		
381	Spring Washer 6201 K3	966 929	1		
380	Rear Bearing 6202 2RSCM	951 104	1		
379	Front Bearing 6202 2RSCM	951 107	1		
378	Rotor	600 378	1		
377	Stator	600 377	1		
376	Rotor Shaft	600 376	1		only with Pos. 378
375	Motor Housing incl. Stator	600 375	1		
374					
373	Wheel Lock ø6x20	600373	1		
372	Truing Diamond M8x16	600 372	1		
371	Special Socket Cap Screw	600 371	2		
370	Cone Point Socket Cap Screw	600 370	1		
369	Lock Collar ø15/25	600 369	1		DIN 705 A
368					
367					
366	Wheel Flange complet	600 366	1		
365	Schutzblech	600 365	1		
364	Handwheel	600 364	1		
363	Wheel Weight	600 363	1		
362	Setting and Truing Plate	600 362	1		
361	Spacer	600 361	1		
360	Shaft	600 360	1		
359	Cover Hub	600 359	1		
358	Outer Wheel Guard	600 358	1		
357	Inner Wheel Guard	600 357	1		
356	Wheel Flange Plate	600 356	1		
355	Wheel Flange Hub	600 355	1		
354	Fly Wheel	600 354	1		
353	Front Motor Flange	600 353	1		
352	Rear Motorflansch Flange	600 352	1		
351	Motor Housing	600 351	1		

Pos.	Article	Art. Nr.	Pcs	Price	Notes
------	---------	----------	-----	-------	-------

Customer:		Notes:	
-----------	--	--------	--

PO	
----	--

Projekt-Nr:	
-------------	--

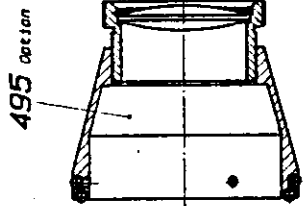
Drawn:		Changes:		Page
--------	--	----------	--	------

Checked:				1/2
----------	--	--	--	-----

Approved:				
-----------	--	--	--	--

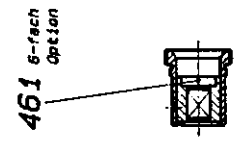
414	Hex Jam Nut M8	964 506	2	DIN 439B
413				
412	Flat Head Screw 90° M4x8	961 010	3	DIN 7991
411	Flat Head Screw 90° M6x16	961 033	1	DIN 7991
410	Flat Head Screw 90° M5x12	961 022	3	DIN 7991
409	Socket Cap Screw M6x20	964 080	3	DIN 7984
408	Socket Cap Screw M5x12	960 044	6	DIN 912
407				
406				
405	Set Screw M8x16	962 132	1	DIN 913
404	Set Screw M8x8	962 123	3	DIN 913
403	Set Screw M6x8	962 083	1	DIN 913
402				
401	Set Screw M5x6	962 044	2	DIN 913
400	Set Screw M4x4	962 020	3	DIN 913
399				
398				
397	Dowel Pin ø5x20	965 056	2	DIN 6325
396	Roll Pin 2x8	965 820	1	DIN 1481
395				
394				
393				
392				
391				
390	Compression Spring	600 390	1	
389	Grinding Wheel 60	600 389	1	Standard
388	Knob	975 011	1	DIN 913
387	Knob	600 387	1	
386	Compression Spring	600 386	2	
385	Ball ø5	955 511	2	

Pos.	Article	Art. Nr.	Pcs	Price	Notes
Customer:		Notes:			
PO					
Projekt-Nr.					
Drawn:		Changes:			Page
Checked:					2/2
Approved:					



495 Option

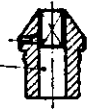
M 1:2



461 6-fach Option

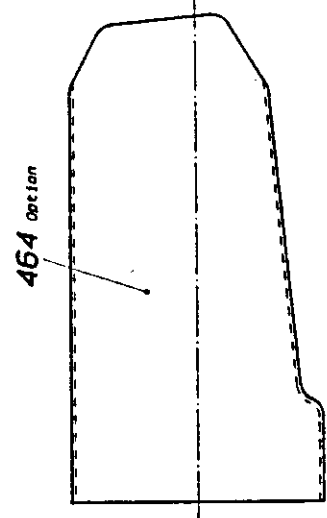


462 14-fach Option



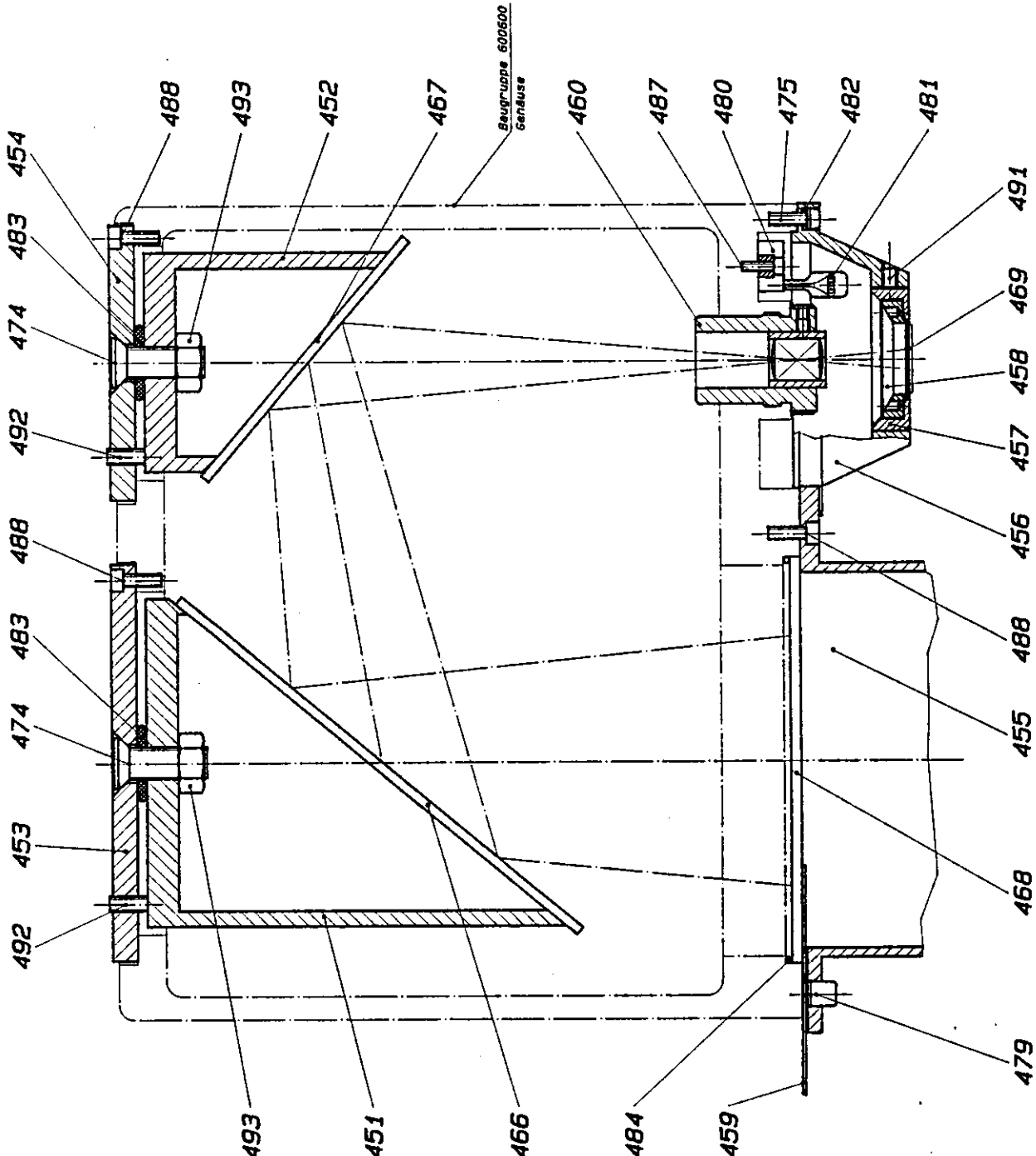
463 20-fach Option

M 1:2



464 Option

M 1:2



Beugruppe 600600
Gendüse

Best-Nr.	600450 / Optik	ERSATZ DÜSEN
gehört zu	600450 / Bohrschießmaschine	ERSATZ FUß
NETZ	1:1	GRÖßE: 23.07.84 mm/Ne
		PLATT: HP - 7500 - 6
		GRUPP.
		BEZEICHN.
		600450
		COMPUTER-NR.: 60002450

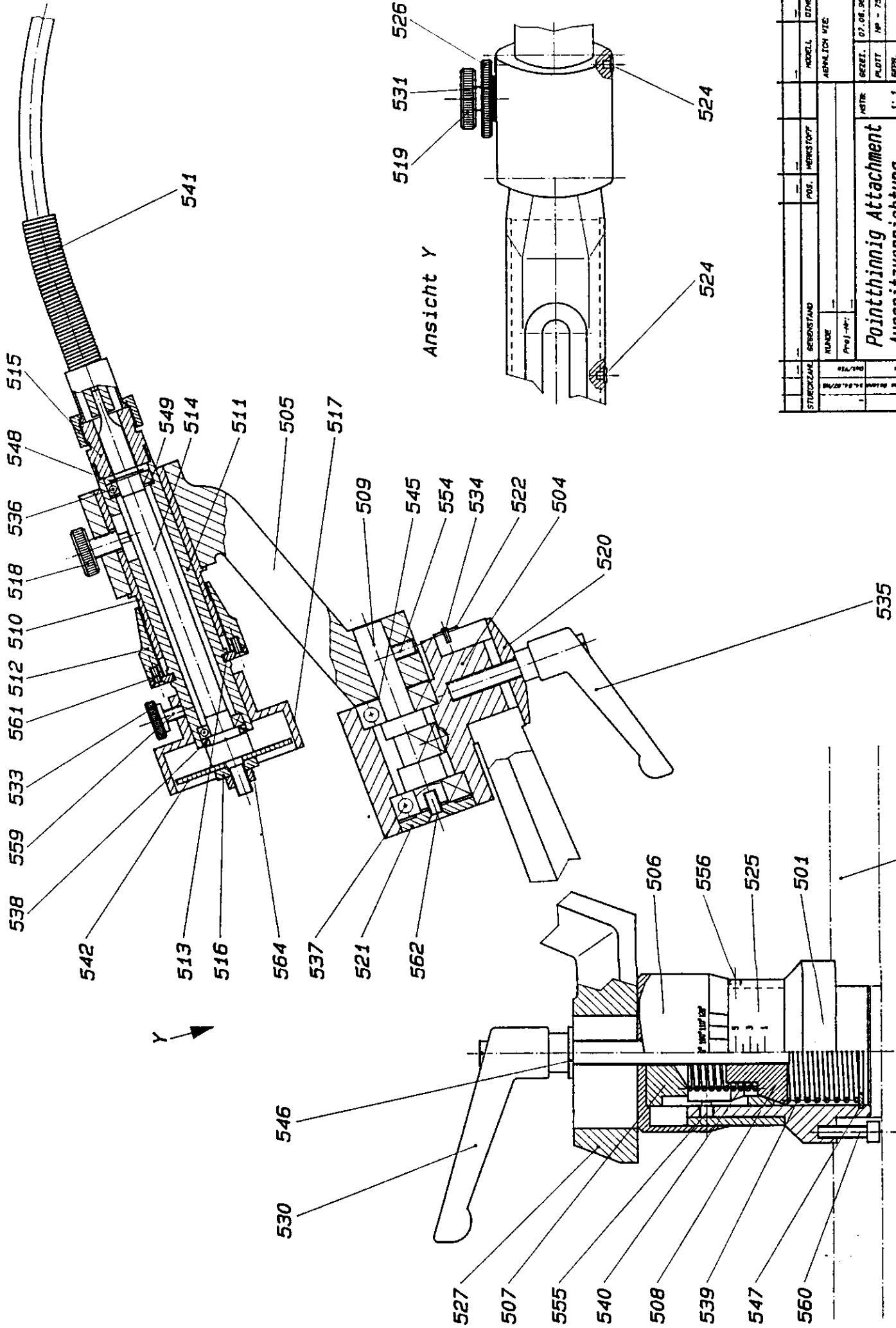
Optik



30 45 Thun/Sheet
Net: 6000 10 00
Post: 6000 10 00

484	Viewing Screen Rubber Spacer ø2x40	957 990	3		
483	O-Ring ø10x6,5	957 800	2		
482	O-Ring ø2,9x1,78	957 562	3		
481	Bulb	976 002	2		
480	Bulb Socket	976 001	2		
479	Spring Plunger	975 070	2		
478					
477					
476					
475	Socket Cap Screw	600 475	3		
474	Flat Head Screw 90° M10x40	600 474	2		
473					
472					
471					
470					
469	Contact Lens ø24	600 469	1		
468	Viewing Screen	600468	1		
467	Small Mirror	600 467	1		
466	Large Mirror	600 466	1		
465					
464	Hood Extension	600 464			Option
463	20 Power Lens	600 463			Option
462	14 Power Lens	600 462			Option
461	6 Power Lens	600 461			Option
460	10 Power Lens	600 460	1		Standard
459	Comparator	600 459	2		
458	Lens Clamp	600 458	1		
457	Lens Holder	600 457	1		
456	Lens Cover	600 456	1		
455	Protection Hood	600 455	1		
454	Small Mirror Flange	600 454	1		
453	Large Mirror Flange	600 453	1		
452	Small Mirror Mounting	600 452	1		
451	Large Mirror Mounting	600 451	1		

Pos.	Article	Art. Nr.	Pcs	Price	Notes
Customer:		Notes:			
PO					
Projekt-Nr:					
Drawn:		Changes:			Page
Checked:					1/2
Approved:					



STÜCKLISTE	SEBENSTAND	PROJ.-NR.	PROJ.-STOFF	ABNÄHME-NR.	ABNÄHME-NR.
1	1				
1	1				
Pointthinnig Attachment Auspitzvorrichtung			MATR.	1: 1	
600500A			BEZUGS-NR.	07.08.30 600/600	
HERMANN & CO. AG WEGEN-POST			PLATT-NR.	10 - 7390 - 8	
3048 Bismarckstr. Bismarck			BRUCH-NR.		
Computer-IMP.			BRUCH-NR.		
600500A			BRUCH-NR.		
Computer-IMP.			BRUCH-NR.		

Beuggruppe 600 600
 Gehäuse
 Assembly 600 600
 10002107

534	Drive Screw ø1,85	964 020	2		
533	Wheel Guard Lock Screw M5	975 043	1		
532					
531	Disc Spring	967 815	2		
530	Adjustable hand lever	600 530	1		
529					
528					
527	Support	600 527	1		
526	Knurled lock nut	600 526	1		
525	Scale	600 525	1		
524	Indicator	600 109	3		
523					
522	Scale	600 522	1		
521	Bearing Cover	600 521	1		
520	Clamp Plate	600 520	1		
519	Knurled depht Screw	600 519	1		
518	Knurled lock Screw	600 518	1		
517	Wheel Guard	600 517	1		
516	Spacer	600 516	1		
515	Adapter	600 515	1		
514	Point Thinning Shaft	600 514	1		
513	Split Ring	600 513	1		
512	Feed Thimble	600 512	1		
511	Shaft Housing	600 511	1		
510	Feed Sleeve	600 510	1		
509	Depht Shaft	600 509	1		
508	Cone	600 508	1		
507	Guide Sleeve	600 507	1		
506	Scale	600 506	1		
505	Vertical Arm	600 505	1		
504	Bearing Housing	600 504	1		
503					
502					
501	Base	600 501	1		

Pos.	Article	Art. Nr.	Pcs	Price	Notes
------	---------	----------	-----	-------	-------

Customer:		Notes:
PO		
Projekt-Nr:		

Drawn:		Changes:		Page
Checked:				1/2
Approved:				

564	Hex Nut M6 Left	964 790	1		DIN 934
563					
562	Flat Head Screw M5x12	961 022	1		DIN 7991
561	Flat Head Screw M3x8	961 001	6		DIN 7991
560	Allen Screw M5x20	960 046	3		DIN 912
559	Allen Screw M5x10	960 043	1		DIN 912
558					
557					
556					
555	Set Screw M6x8	962 085	1		DIN 915
554	Set Screw M6x12	962 090	1		DIN 914
553					
552					
551					
550					
549	Spring Washer	966 911	1		
548	Retaining Ring A10	967 007	1		DIN 471
547	Retaining Ring J44	967 133	1		DIN 472
546	Washer 10,5/21x2	966 000	1		DIN 125 A
545	Seal 12/18x0,5	966 201	1		DIN 988
544					
543					
542	Thinning Wheel ø50x3	600 542	1		Standard
541	Flexible Cable	975 080	1		
540	Compression Spring	600 540	1		
539	Compression Spring	600 539			
538	Seal G13x19x3	957 015	1		
537	Ball Bearing 6201-RSCM	951 104	2		
536	Ball Bearing 6800 2Z	950 002	2		
535	Adjustable hand Lever	975 000	1		

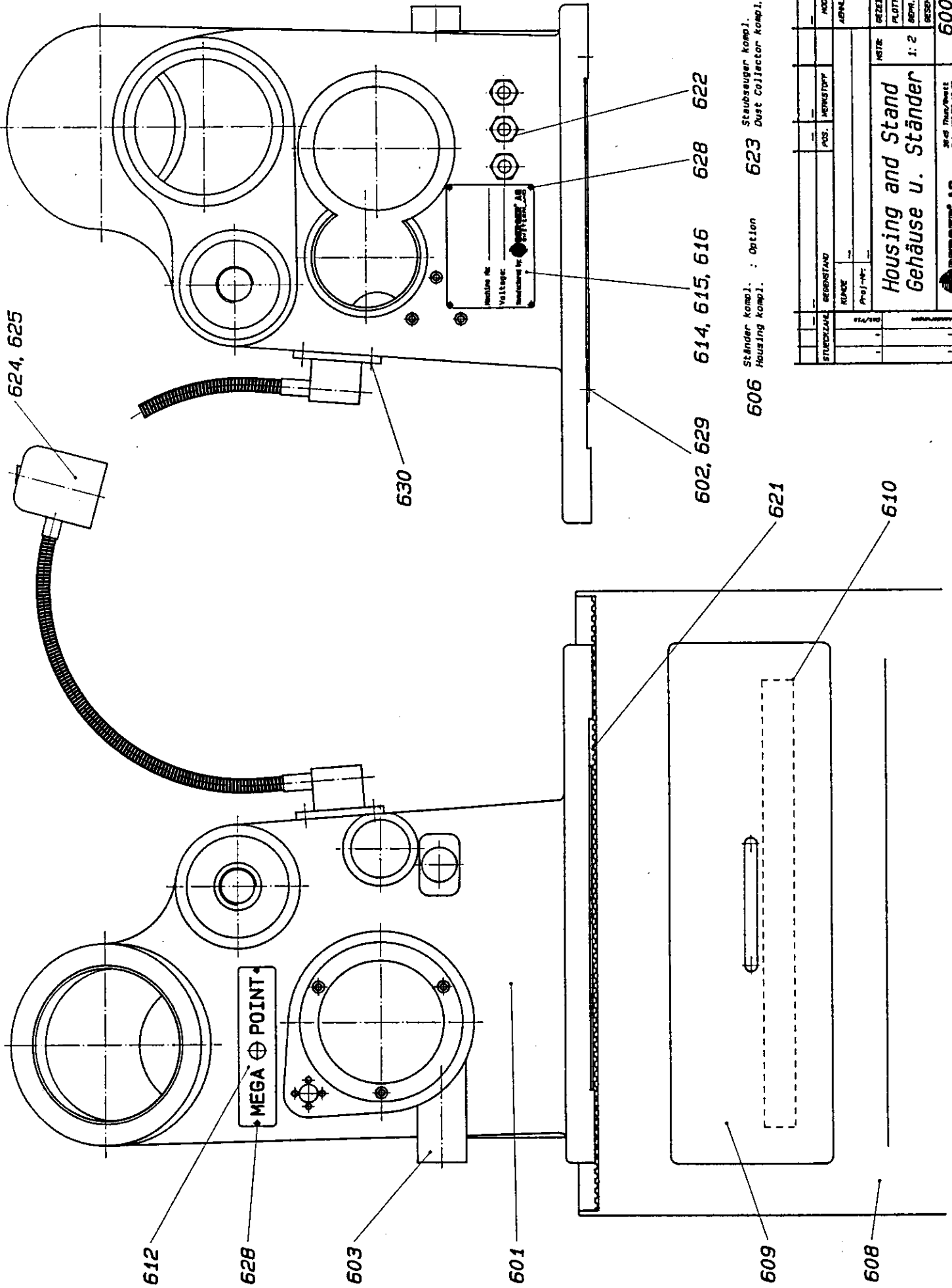
Pos.	Article	Art. Nr.	Pcs	Price	Notes
------	---------	----------	-----	-------	-------

Customer:		Notes:	
-----------	--	--------	--

PO	
----	--

Projekt-Nr:	
-------------	--

Drawn:		Changes:		Page
Checked:				2/2
Approved:				



606 Ständer Komp. : Option Staubseuger Komp. : Option
 623 Housing Komp. : Option Dust Collector Komp. : Option

STÜCKZAHL	BEZUGSSTAND	POS.	NENNSTÜCK	MODELL	ABMÄßLICH VTE	GRÖßE	PROJ.-NR.	MANUF.-NR.
1								
1								
1								
1								

SEZEL.	07.06.98	REV./NO	
FLUIT	IP - 7500 - 8		
GRPH.			
RESENYM			
NETE	1:2		

DEUTSCHER AG MEGA-POINT 2045 Thun/Oberrhein 7145 033208 18 88 Fax: 033208 18 89		600600 COMPUTER-NR.: 62600600
--	--	---

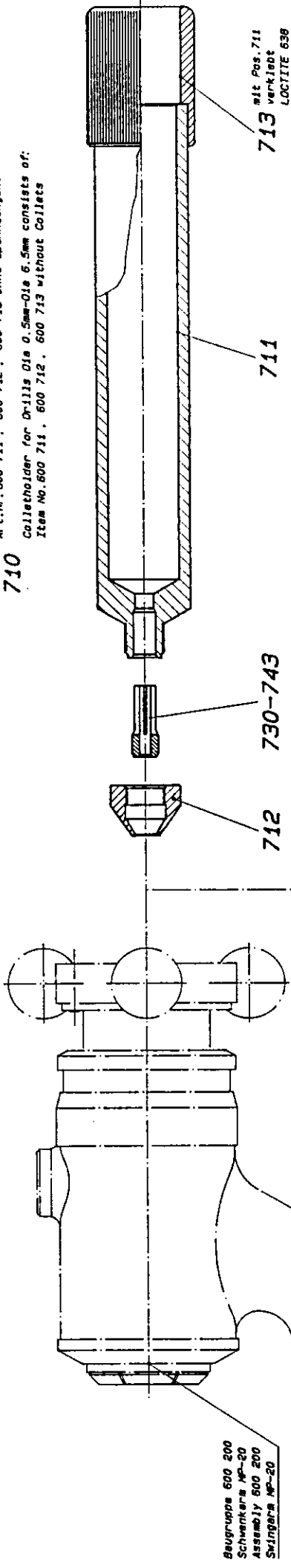
630	Flat Head Screw M4x12	961 012	2		DIN 7991
629	Socket Cap Screw M4x10	960 024	4		DIN 912
628	Screw M2,5x8	964 035	6		DIN 966 A
627					
626					
625	Bulb	976 002			Option
624	Machine Light	976 009			Option
623	Vacuum Cleaner Complete	976 011			Option
622	Cord Restraint	976 010	3		
621	Rubber Mat	600 621	1		
620					
619					
618					
617					
616	Nameplate	600 616	1		
615	Nameplate USA	600 615	1		
614	Nameplate Europa	600 614	1		
613					
612	Nameplate	600 612	1		
611					
610	Drawer Insert	600 610	1		
609	Drawer	600 609	1		
608	Machine Base	600 608	1		
607					
606	Machine Base Compete	600 606			Option
605					
604					
603	Dust Connection	600 603	1		
602	Bottom Cover	600 602	1		
601	Machine Housing	600 601	1		

Pos.	Article	Art. Nr.	Pcs	Price	Notes
Customer:		Notes:			
PO					
Projekt-Nr:					
Drawn:		Changes:			Page
Checked:					1/1
Approved:					

Spannzangenfutter für Bohrer ø 0.5 - ø 6.5 bestehend aus:
 Art.Nr: 600 711, 600 712, 600 713 ohne Spannzangen.

710

Collet holder for Drills Dia 0.5mm-Dia 6.5mm consists of:
 Item No. 600 711, 600 712, 600 713 without Collets

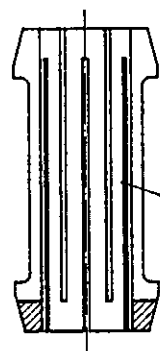
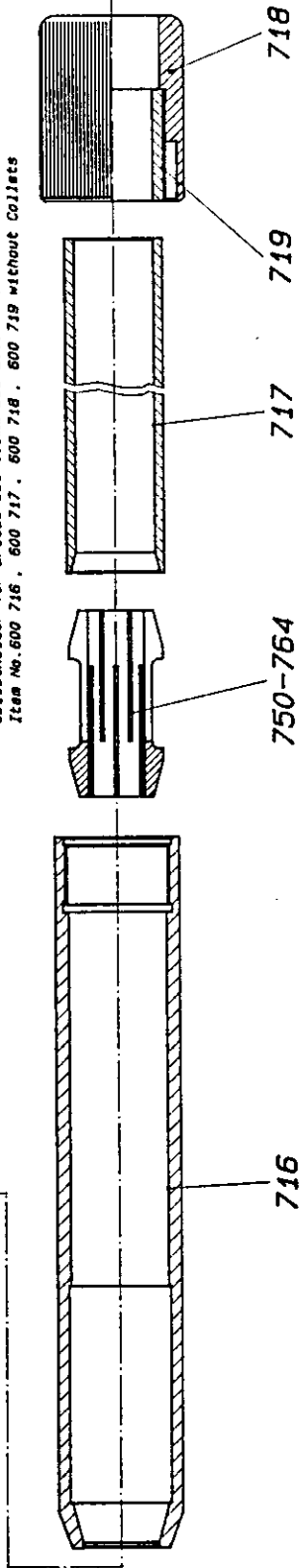


Beugruppe 600 200
 Schwenker MP-20
 Assembly 600 200
 Swingers MP-20

Spannzangenfutter für Bohrer ø 6.0 - ø 20.0 bestehend aus:
 Art.Nr: 600 716, 600 717, 600 718, 600 719 ohne Spannzangen.

715

Collet holder for Drills Dia 6.0mm-Dia 20.0mm consists of:
 Item No. 600 716, 600 717, 600 718, 600 719 without Collets



STÜCKZAHL	BEZEICHNUNG	MATERIAL	PROZ.	WERTSTOFF	MODELL	DIMENSION
1	710					
1	715					
1	716					
1	717					
1	718					
1	719					
1	770-775					
KUNDE Proj.-Nr.: AEM/LICH NITE						
NSTR: 07.06.98 100/100 PLATT: HP - 7500 - B GEPR.: BESCHN.:						
Tool Holder Werkzeugaufnahmen						
Maßstab: 1:1 100%						
600700 COMPUTER-NR.: CP600700						
SWINGERS AG MEGA-POINT 9648 Thurn/Daill TEL: 0332/36 15 00 FAX: 0332/36 16 00						

734	Collet MP-6,5 ø 2,5	600 734	1		
733	Collet MP-6,5 ø 2,0	600 733	1		
732	Collet MP-6,5 ø 1,5	600 732	1		
731	Collet MP-6,5 ø 1,0	600 731	1		
730	Collet Set MP-6,5	600 730	1		ø 1,0 - ø 6,5
729					
728					
727					
726					
725					
724					
723					
722					
721					
720					
719	Threaded Insert	600 719	1		
718	Collet Clamp	600 718	1		
717	Collet Pusher	600 717	1		
716	Collet Holder MP-20	600 716	1		
715	Collet Holder MP-20	600 715	1		Complete
714					
713	Collet Holder Grip	600 713	1		
712	Nosepiece MP-6,5	600 712	1		
711	Collet Holder Body MP-6,5	600 711	1		
710	Collet Holder MP-6,5	600 710	1		Complete
709					
708					
707					
706					
705					
704					
703					
702					
701					

Pos.	Article	Art. Nr.	Pcs	Price	Notes
------	---------	----------	-----	-------	-------

Customer: _____ Notes: _____

PO _____

Projekt-Nr: _____

Drawn:		Changes:		Page
Checked:				1/3
Approved:				

 BERGER® AG	Tool Holder	600 700
--	--------------------	----------------

768					
767					
766					
765					
764	Collet MP-20 ø 20,0	600 764	1		
763	Collet MP-20 ø 19,0	600 763	1		
762	Collet MP-20 ø 18,0	600 762	1		
761	Collet MP-20 ø 17,0	600 761	1		
760	Collet MP-20 ø 16,0	600 760	1		
759	Collet MP-20 ø 15,0	600 759	1		
758	Collet MP-20 ø 14,0	600 758	1		
757	Collet MP-20 ø 13,0	600 757	1		
756	Collet MP-20 ø 12,0	600 756	1		
755	Collet MP-20 ø 11,0	600 755	1		
754	Collet MP-20 ø 10,0	600 754	1		
753	Collet MP-20 ø 9,0	600 753	1		
752	Collet MP-20 ø 8,0	600 752	1		
751	Collet MP-20 ø 7,0	600 751	1		
750	Collet Set MP-20	600 750	1		ø 7,0 - ø 20
749					
748					
747					
746					
745					
744					
743					
742	Collet MP-6,5 ø 6,5	600 742	1		
741	Collet MP-6,5 ø 6,0	600 741	1		
740	Collet MP-6,5 ø 5,5	600 740	1		
739	Collet MP-6,5 ø 5,0	600 739	1		
738	Collet MP-6,5 ø 4,5	600 738	1		
737	Collet MP-6,5 ø 4,0	600 737	1		
736	Collet MP-6,5 ø 3,5	600 736	1		
735	Collet MP-6,5 ø 3,0	600 735	1		

Pos.	Article	Art. Nr.	Pcs	Price	Notes
Customer:		Notes:			
PO					
Projekt-Nr:					
Drawn:		Changes:			Page
Checked:					2/3
Approved:					

